

ESE1 Antibody
Rabbit mAb
Catalog # AP92498**Specification**

ESE1 Antibody - Product Information

| | |
|-----------------------------------|------------------------|
| Application | WB, FC |
| Primary Accession | P78545 |
| Reactivity | Rat |
| Clonality | Monoclonal |
| Other Names | |
| Elf3; EPR1; ERT; ESE-1; ESX; jen; | |
| Isotype | Rabbit IgG |
| Host | Rabbit |
| Calculated MW | 41454 Da |

ESE1 Antibody - Additional Information

| | |
|------------------------------|---|
| Dilution | WB~~1:1000 FC~~1:10~50 |
| Purification | Affinity-chromatography |
| Immunogen | A synthesized peptide derived from human ESE1 |
| Description | Transcriptional activator that binds and transactivates ETS sequences containing the consensus nucleotide core sequence GGA[AT]. Acts synergistically with POU2F3 to transactivate the SPRR2A promoter and with RUNX1 to transactivate the ANGPT1 promoter. |
| Storage Condition and Buffer | Rabbit IgG in phosphate buffered saline , pH 7.4, 150mM NaCl, 0.02% sodium azide and 50% glycerol. Store at +4°C short term. Store at -20°C long term. Avoid freeze / thaw cycle. |

ESE1 Antibody - Protein Information**Name** ELF3 ([HGNC:3318](#))**Function**

Transcriptional activator that binds and transactivates ETS sequences containing the consensus nucleotide core sequence GGA[AT]. Acts synergistically with POU2F3 to transactivate the SPRR2A promoter and with RUNX1 to transactivate the ANGPT1 promoter. Also transactivates collagenase, CCL20, CLND7, FLG, KRT8, NOS2, PTGS2, SPRR2B, TGFB2 and TGM3 promoters. Represses KRT4 promoter activity. Involved in mediating vascular inflammation. May play an important role in epithelial cell differentiation and tumorigenesis. May be a critical downstream effector of the ERBB2 signaling pathway. May be associated with mammary gland development and involution.

Plays an important role in the regulation of transcription with TATA-less promoters in preimplantation embryos, which is essential in preimplantation development (By similarity).

Cellular Location

Cytoplasm. Nucleus {ECO:0000255|PROSITE-ProRule:PRU00237, ECO:0000269|PubMed:10391676, ECO:0000269|PubMed:15169914, ECO:0000269|PubMed:17060315} Note=Localizes to the cytoplasm where it has been shown to transform MCF-12A mammary epithelial cells via a novel cytoplasmic mechanism Also transiently expressed and localized to the nucleus where it induces apoptosis in non-transformed breast epithelial cells MCF-10A and MCF-12A via a transcription-dependent mechanism

Tissue Location

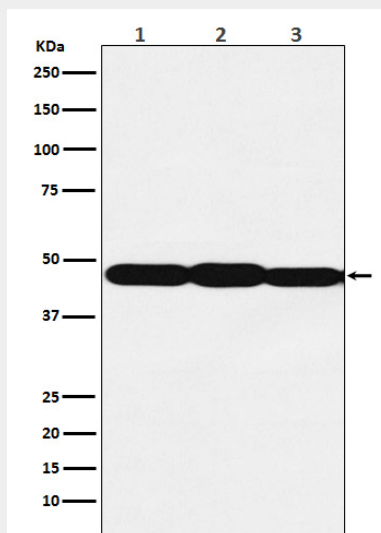
Expressed exclusively in tissues containing a high content of terminally differentiated epithelial cells including mammary gland, colon, trachea, kidney, prostate, uterus, stomach and skin

ESE1 Antibody - Protocols

Provided below are standard protocols that you may find useful for product applications.

- [Western Blot](#)
- [Blocking Peptides](#)
- [Dot Blot](#)
- [Immunohistochemistry](#)
- [Immunofluorescence](#)
- [Immunoprecipitation](#)
- [Flow Cytometry](#)
- [Cell Culture](#)

ESE1 Antibody - Images



Western blot analysis of ESE1 expression in (1) A431 cell lysate; (2) NIH/3T3 cell lysate; (3) C6 cell lysate.